



## Places where you can use your coupon Privileges

Show your coupon at the places listed here to get privileges. \*Can be used only once at each place.



### 01 Shishiku Plateau Paraglider School

**Closed**  
late Nov. - end of March

Open every day. Even a beginner can try a tandem-ride with an instructor.

**Tandem ride : 1,000-yen discount (regular fee:10,000 yen)**  
\*Reservation required by the day before (or on the day if a ride is available).



### 02 Sky Shishiku Paraglider School

**Closed**  
late Nov. - end of March

Open every day. Even a beginner can try a tandem-ride with an instructor.

**Tandem ride : 1,000-yen discount (regular fee:10,000 yen)**  
\*Reservation required by the day before (or on the day if a ride is available). There may not be rides available without reservation during busy periods.



### 03 Hirono (sweets)

Traditional Japanese sweets featuring a KOBITOS character or containing sake.

**Closed** Tuesdays

**One free sweet for a purchase for 1,000 yen or more.**



### 04 Oya Soy Sauce

Founded in 1877. This soy sauce made of spring water from Mt. Hakusan is popular.

**Closed** 2nd and 4th Sun.

**50-yen discount**



### 05 Koshihara Kanseido (sweets)

Japanese sweets inspired by Mt. Hakusan, including sweets containing sake and horseradish.

**Closed** Tuesdays

**One free sweet for a purchase for 1,000 yen or more.**



### 06 Tengu Nakata (butcher)

A branch of the famous butcher shop in Kanazawa. Homemade roast pork is popular.

No deep-fried food on Mon.

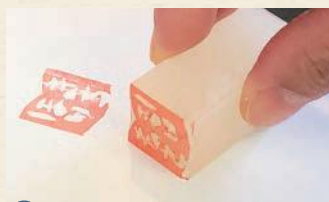
**Japanese Black beef croquette (130 yen) : 20-yen discount**



### 07 Kikuhime Sake Brewery

This 400-year-old sake brewery is very popular among Japanese people.

**An original Kikuhime premium if you make a purchase**



### 08 Horikichi Bookstore

Books about Hakusan and KOBITOS goods are sold here.

**Closed** 1st and 3rd Sun.

**Make a seal out of an eraser! (free)**  
\*You must be able to use a carving knife.



### 09 Qui (quiche)

Gluten-free quiche made of rice flour from Hakusan.

**Closed** Tue./ 2nd and 4th Mon.

**One free cup of coffee if you order quiche**



### 10 Kanoya (inn)

This Japanese-style inn serves good food. Enjoy your lunch at a Japanese-style table.

**Closed** (lunch) : Mon./ 1st, 3rd, 5th Sun.

**One free mini ice cream if you order lunch**



### 11 Park Shishiku

See the largest lion mask in the world at the Shishiku World Museum.

**Closed** Tuesdays (Tue. and Fri. in winter)

**100-yen discount for coffee (200 yen) at Shishiku World Museum**



### 12 Sky Shishiku

Enjoy lunch and sweets while admiring the scenery from the mountain.

**Closed** Tuesdays (Tue. and Fri. in winter)

**When you order food, ①free soft ice cream or ②original badge**



### 13 Guest House cototto

A reasonable place to stay in Tsurugi. The cafe (1st floor) serves lunch.

**2,000 yen / person per night (regular price: 2,500 yen)**  
\*Reservation required

**A pair of original ballpoint pens for two or more overnight guests (reservation required)**

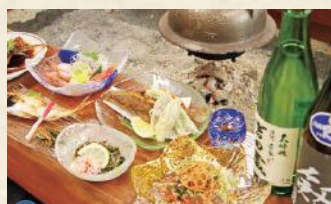


### 14 Sakai (inn)

This inn near Shirayama Hime Shrine serves good homemade buckwheat noodles.

**Closed** (Noodle restaurant) : Tuesdays

**A pair of original ballpoint pens for two or more overnight guests (reservation required)**



### 15 Shishikuso (inn)

Please enjoy the homemade rice and seasonal dishes.

**Free coffee after breakfast for two or more overnight guests (reservation required)**



### 16 Geo Tour in Tsurugi

Guided tour of Shirayama Hime Shrine, Tsurugi Betsuin, Kinkengū and Honmachi.

**Closed** Year-end and New Year's holidays

**300-yen discount per person (regular price: 1,800 yen, two or more people)**  
\*Reservation required by the day before (Hakusan Tourism League)

\*The shops and facilities may be closed during the year-end and New Year's holidays and Bon period in summer. Ask each place for detailed information.

**[ Sales ]** Hokuriku Railroad Co., Ltd.  
**[ Project ]** Hakusan City Tourism League  
**[ Cooperation ]** Kanazawa City Tourism Association

#### Inquiries

**▶About tickets :**  
Hokuriku Railroad Telephone Service Center  
076-237-5115 (8:00am~7:00pm)  
**▶About this brochure :**  
Hakusan City Tourism League  
076-259-5893 (8:30am~5:00pm)

Kanazawa Station  
Tsuzumimon Gate



Buy a Tsurugi Town Strolling Coupon at the  
"Hokutetsu Kanazawa Station Center"  
(close to Kanazawa Station East Gate Bus Terminal No.1)  
or at "Nomachi Station"  
near Nishi Chaya District.

Nishi Chaya  
District

Use the Hokuriku  
Railroad Ishikawa  
Line to go to  
Tsurugi

Clickety  
-clack

Travel Using a  
Local Line from Kanazawa

# Tsurugi Town Strolling Coupon

Clickety  
-clack



Yokomachi Urarakan



Shirayama Hime Shrine

Tsurugi Town  
Show the coupon  
to get  
special deals.

From Tsurugi Station:  
Bus ride (one way)  
or Bike rental,  
or Taxi discount  
One-time free  
With a free souvenir

First.

Buy a **COUPON** for walking around Tsurugi Town!

STEP  
1

Buy a "Tsurugi Town Strolling Coupon" valid for two days

Ticket  
office

Hokutetsu Kanazawa Station Center or Nomachi Station  
(close to Kanazawa Station East Gate Bus Terminal No.1)

Fare

1,200 yen (tax included) \*Not available from Dec. 29 through Jan. 3.

Contents

- ①One Hokuriku Railroad Ishikawa Line **Nomachi** ↔ **Tsurugi** ticket
- ②One Hokuriku Railroad Ishikawa Line **Tsurugi** ↔ **Nomachi** ticket
- ③A souvenir coupon: Get a souvenir at **Yokomachi Urarakan**  
\*When Yokomachi Urarakan is closed, you can get your souvenir at the Hakusan City Tourism League office.
- ④One of the following privileges (one time only)
  - Kaga Hakusan Bus** One-way ticket between Tsurugi Station and Ichinomiya  
\*One ride only
  - Rental Bike** One-day rental ticket for a regular bike  
\*Register at the Hakusan City Tourism League office (in front of Tsurugi Station).  
\*Electric bikes are available for an additional fee.
  - Kanaya Taxi** 200-yen discount ticket \*One ride only

STEP  
2

Get set for a walk around Tsurugi Town!  
Use your coupon while walking around.

Show your coupon at the places listed in this brochure to get privileges.  
\*Can be used only once at each place.

#### Coupon Information

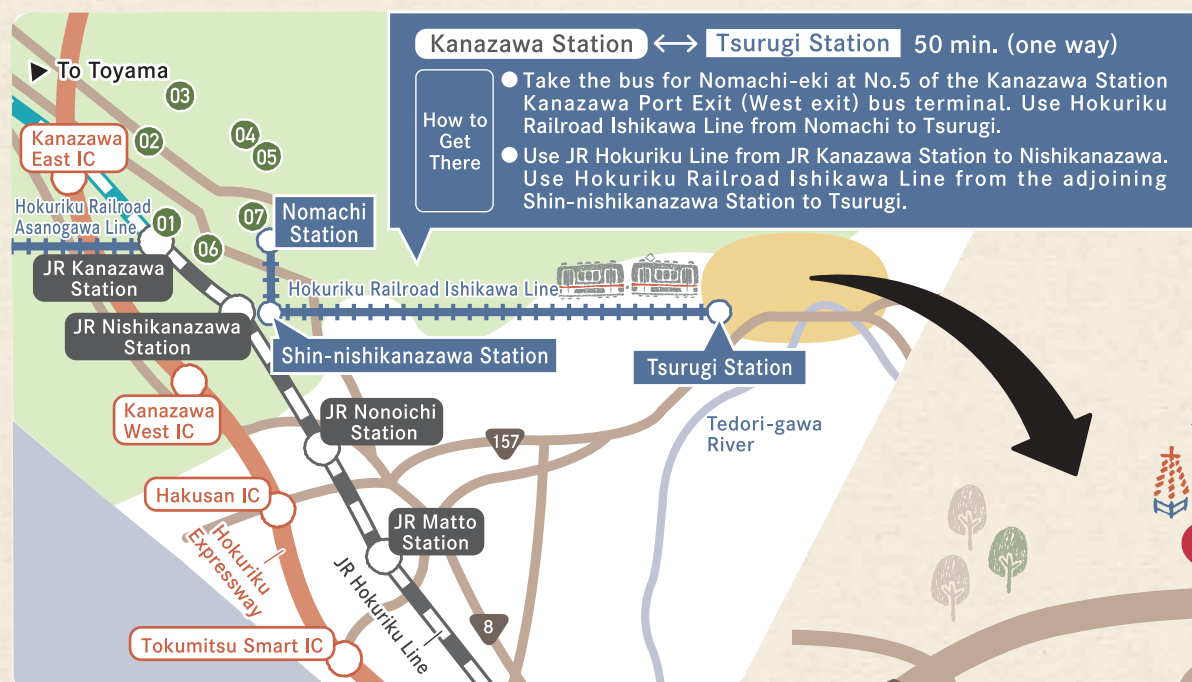
- Get your coupon stamped by a clerk to show the date of use.
- The coupon privileges are available for two days.
- Show the stamp of the date of use to the clerk or driver when you take a train or a bus.
- When you board a bus, take a slip that shows the number of the bus stop. If you leave the area for which the coupon is valid, you will need to pay an additional fare.
- Coupons cannot be used if they are missing the date stamp or if their period of validity is over.
- The coupon can be refunded at the ticket office within the period of validity if it has not been used. A refund fee will be charged.
- Coupons are not available from Dec. 29 through Jan. 3.
- Check the places where you can use your coupon and the privileges you can get on the back of this brochure or on the Hakusan City Tourism League website (<http://www.city.hakusan.lg.jp/otherdata/sightseeing/>).





Travel Using a Local Line from Kanazawa

# Tsurugi Town Strolling Coupon

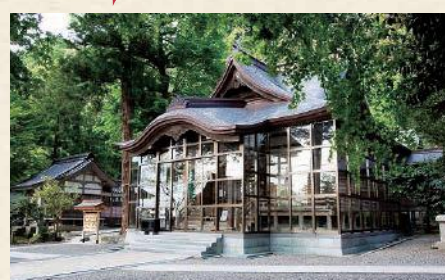


## Sightseeing Spots [Kanazawa Area]

- 01 **Kanazawa Station Tsuzumimon Gate**  
The entrance to Kanazawa
- 02 **Omi-cho Market**  
Known as the "citizens' kitchen"
- 03 **Higashi Chaya District**  
One of Kanazawa's three Geisha areas
- 04 **Kenrokuen Garden**  
One of the three most beautiful gardens in Japan
- 05 **21st Century Museum of Contemporary Art, Kanazawa**  
A museum open to the public like a park
- 06 **Nagamachi Samurai Houses**  
Houses of the Kaga Clan middle-class warriors
- 07 **Nishi Chaya District**  
One of Kanazawa's three Geisha areas



## Sightseeing Spots [Tsurugi Area]



### A Kinkengu Shrine

This shrine used to be called Tsurugi-no-miya, which is the origin of the town's name. It is now attracting attention as a place that brings financial fortune.



### B Shishiku Plateau

This place has full command of the beautiful alluvial fan of the Tedoru River. You can easily get to the top, which is famous for paragliding, by gondola.



### C Insect Museum

This prefectural museum exhibits insects of the world. It has a butterfly garden with 1,000 butterflies flying about, as well as study and information areas.



### D Shirayama Hime Shrine

This is the head shrine for 3,000 Hakusan Shrines in Japan, where the sacred Mt. Hakusan is worshipped. It is respected as the first shrine of the Kaga Domain, and called Shirayama-san by the local residents.

- Sightseeing Spots [Kanazawa Area]
- Sightseeing Spots [Tsurugi Area]
- Places to Use the Coupon

## Inquiries

### About tickets:

Hokuriku Railroad Telephone Service Center  
076-237-5115 (8:00am~7:00pm)

### About this brochure:

Hakusan City Tourism League  
076-259-5893 (8:30am~5:00pm)